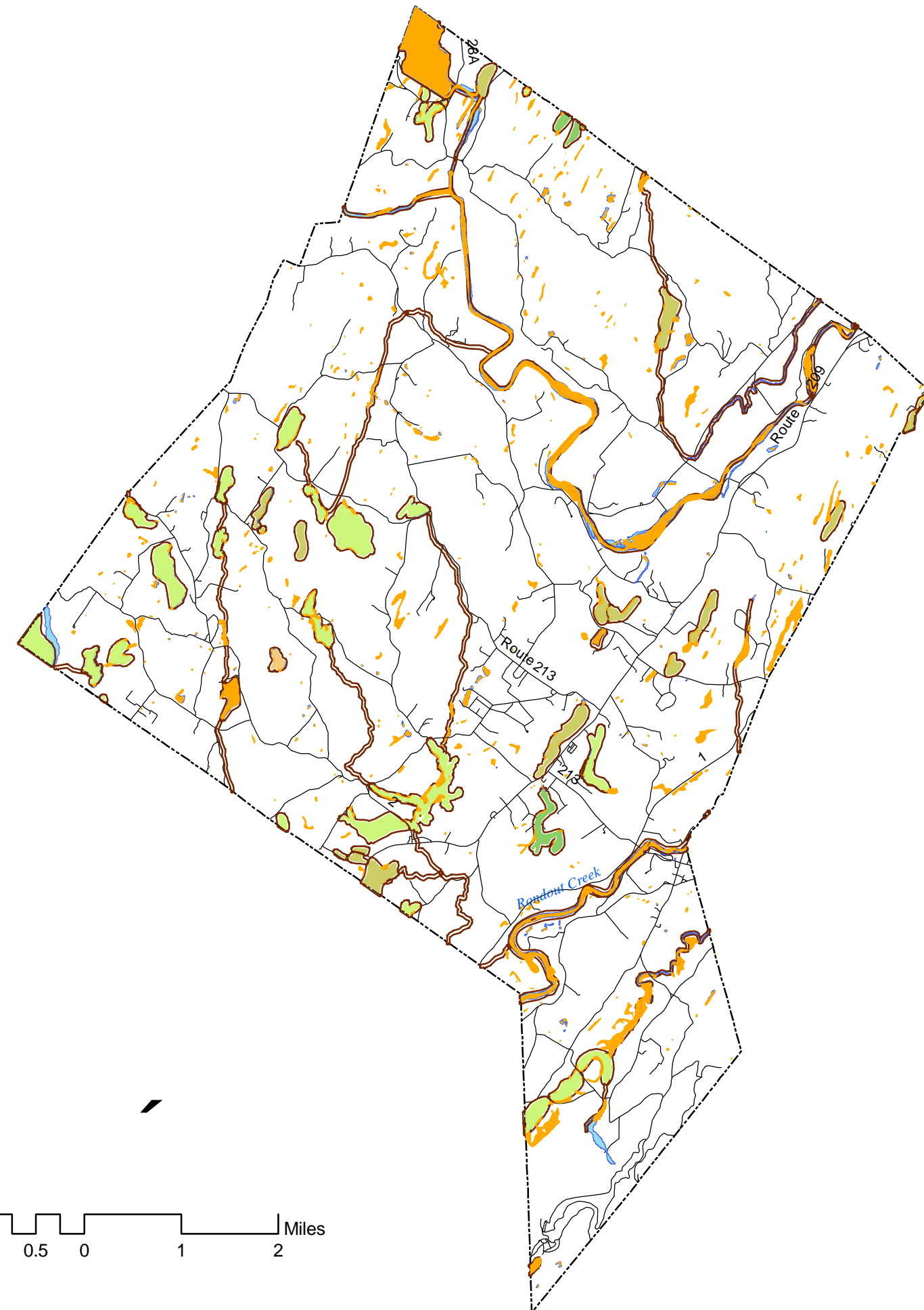









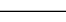
Wetlands



Legend

-  **Nat'l. Wetlands Inventory**
- New York State Wetlands**
- Class
-  I-Most Sensitive
-  II
-  III
-  IV-Least Sensitive
-  100' Buffer

Key

-  Waterways & -bodies
-  Roads

Sources

Roads: NYSDOT--2000--(1:24,000)
 Hydrography: NYS Office of Cyber Security and
 Critical Infrastructure Coordination--1999--(1:25,000)
 NWI: USFWS--1994--(1:24,000)
 State Wetlands: NYSDEC--2001--(1:24,000)

GIS data are approximate according to their scale and resolution. They may be subject to error and are not a substitute for on-site inspection or survey.

Summary

Protected Wetlands make up approximately 8% of the land cover in Marbletown. These wetlands are strictly protected by state and federal law, because they perform vital ecological services for nature and society. Buffers are required only around wetlands registered with the state. The town has a large number of unique and sensitive wetlands (Classes I and II). Due to mapping practices, there may be wetlands in Marbletown that are not currently mapped.

Recommendations

Current regulations must be respected. No regulated wetland can be disturbed. The 25-foot outer buffer section of the 100-foot buffer around New York State Regulated Wetlands allows minimal disturbance. Since not all wetlands may be mapped or mapped accurately, particularly those on the National Wetlands Inventory, the town may wish to consider an audit of wetlands and further wetland regulation, such as creating buffers around wetlands that are part of the National Wetlands Inventory. Before development near any wetland is approved, a qualified ecologist should be consulted to delineate the actual location and extent of the wetland.

Open Space Index Marbletown, New York

Conway School of Landscape Design
 David Campolong, Nicholas T. Lasoff, Sandy Ross
 April 2005